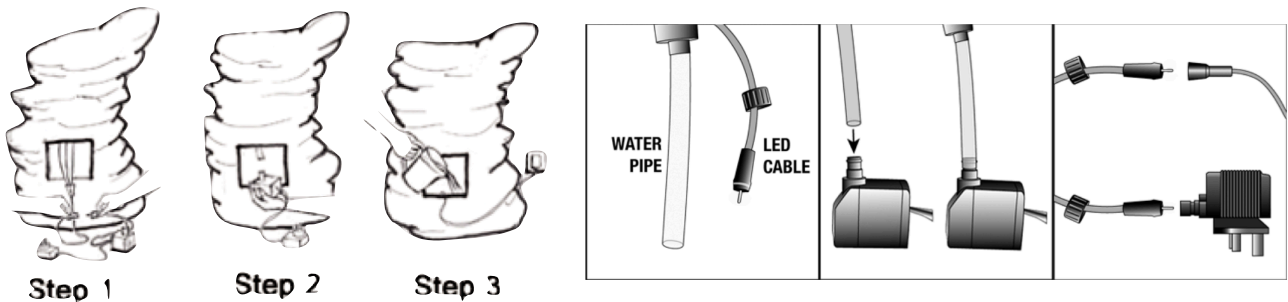


Instruction (EN)

We would like to congratulate you on the purchase of our product. As to secure the functioning and operating safety, please do read the instruction manual before taking it into operation.

1. Operation

- Unpack all parts carefully and check them for completeness. Make sure the fountain on a smooth flat surface.
- Connect the pump to the hose and place pump in bottom of fountain.
- If the fountain with led, connect it to the pump and put the led forward to it proper place.
- Fill fountain with water and make sure pump is totally submerged.
- Plug the power cord into the power outlet and enjoy the wonderful atmosphere.



Attention! The illustration can deviate optically, since the pumps of various. Distinguish fountain in size and appearance slightly. The operation is not affected.

2. Security tips

Obey absolutely valid regulations on the electrical security Never run pump dry Pumping inflammable, as well as all other aggressive liquids is prohibited.

Any altering of the product itself or changing of the components is forbidden, any warranty cannot be granted.

For longer storage periods, the pump clean, rinse with clear water and dry at room temperature.

3. General and Safety:

- The fountain should always be on a flat, clean surface.
- There must always be enough clean water in the well to be present to prevent the pump running dry. Never let the pump run dry.
- Distilled water is recommended, but not necessary.
- Always unplug the power cord before performing service or maintenance.
- Operate the pump only with the voltage specified on the adapter.- No longer use if damaged the power cord, but should be disposed of immediately.
- Check the hoses for blockages and kinks before settling, to avoid this affect the casing of the wells. That may be vibration and loud disturbing noises come.
- The pump must always be completely covered with water to an appropriate to ensure cooling. The water temperature should never be more than 35 C.- Touch the drive unit never in operation.
- Do not turn on the pump when the pump parts or the Product has a damage.
- The head of the pump may be set on different models, take one model suitable to the tube.
- For the models with glass ball, connect the led to the hoses of the tube.
- lease observe all instructions, then you will have continued enjoyment of the product. 35°C
- Touch the drive unit never in operation.
- Do not turn on the pump when the pump parts or the Product has a damage.
- The head of the pump may be set on different models, take one model suitable to the tube.
- For the models with glass ball, connect the led to the hoses of the tube.
- Please observe all instructions, then you will have continued enjoyment of the product.

